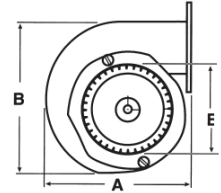


OMNIDRIVE

Crossflow & Centrifugal Blowers

General Purpose & OEM Replacement

Refrigeration, Food Service, Gas & Wood Burning Stoves & Fireplaces



UB5



UB3



UB4



UB33



UFB189



UB579



UFB500



UB160



UB168



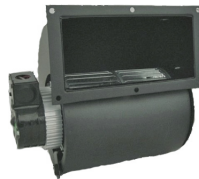
UB1



UB200T-2



UB265



UB465

- Continuous Duty, Air Over
- Class 'B' Insulation
- Sleeve & Ball Bearings
- UL Listed & CSA Approved
- Shaded Pole
- (●) Indicates Motors are Ball Bearing
- Thermally Protected
- Single, Two & Three Speed Models
- Variable Speed Model
- All Angle Mount
- 60 Hz.

| Stock # | CFM | HP | Amps | RPM | A | B | E | Comments |
|----------|-----|-------|------|------|--------|--------|--------|--|
| UB5 | 50 | 1/125 | 0.40 | 1550 | 6-3/8" | 5-3/4" | 3-3/4" | 32" Leads - T.E. Motor |
| UB3 | 100 | 1/50 | 0.80 | 3000 | 6-1/2" | 6-7/8" | 3-3/8" | 6" Cord & Plug |
| UB4 ● | 100 | 1/40 | 0.88 | 3000 | 6-1/4" | 5-1/2" | 3-1/2" | 17" Leads - T.E. Motor |
| UB33 | 100 | 1/50 | 0.88 | 3200 | 6-7/8" | 6-7/8" | 3-3/4" | 6" Cord & Plug - Variable Speed |
| UFB189 | 100 | 1/50 | 1.10 | 3000 | 7.10" | 7.61" | 4.81" | Hot Water Heater |
| UB579 | 100 | 1/35 | 1.20 | 3000 | 7.13" | 7.67" | 4.70" | Radiant Tube Heater |
| UFB500 | 140 | 1/30 | 1.10 | 2860 | 6-1/2" | 6-1/2" | 3-1/8" | Conduit Box |
| UB160 | 160 | 1/33 | 1.10 | 1550 | 8-1/4" | 8-1/8" | 4-1/4" | Leads - No Conduit Box |
| UB168 | 168 | ---- | 1.00 | 3000 | 4-1/8" | 4.00" | 3-1/4" | 24" Cord & Plug |
| UB1 | 200 | 1/30 | 1.20 | 2700 | 6-1/8" | 5-1/2" | 3-1/4" | 6" Cord & Plug |
| UB200T-2 | 200 | 1/100 | 0.60 | 1600 | ---- | ---- | ---- | 3 Speed Switch w/ Cord & Plug 8" Heat Sensor Leads |
| UB265 | 265 | 1/25 | 1.40 | 1550 | 8-1/2" | 9-1/4" | 4-1/4" | Conduit Box |
| UB465 | 465 | 1/15 | 2.60 | 1550 | 8-1/2" | 9-1/4" | 5-5/8" | 2 Speed - Conduit Box - Heat Sink |

