

OMNIDRIVE

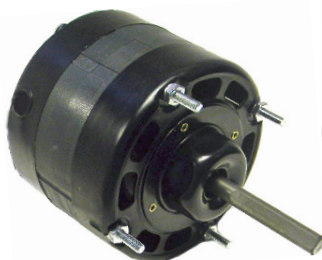
4.1" Diameter

Open Construction

Exhaust Fans, Coolers, Heaters & Condensers



SS958



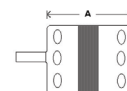
SS174



SS2657 - SS2658



SS2604 - SS2603



- Continuous Duty
- Class 'A' or 'B' insulation
- UL Listed & CSA approved
- Shaded pole
- Thermally protected
- 60 Hz.
- Sleeve Bearings

Stock #	HP	Volts	Amps.	RPM	"A"	Shaft	Rotation	Comments	Replaces
SS958	1/8	115	3.80	1550	3.94"	3/8" x 2.39"	CWSE	18" Leads - Hex Hubs	Franklin 80958
SS174	1/10	115	3.40	1450	3.25"	3/8" x 3.20"	CWSE	24" Leads - Hex Hubs	Fasco D174
SS2604	1/10	120	2.65	1550	3.42"	1/2" x 2.03"	CCWSE	12" Cord & Plug	Reversomatic DB300
SS2657	1/15	230	1.20	1550	3.42"	3/8" x 2.42"	CCWSE	10" Lyall Cord & Plug - Hex Hubs	Keeprite 8/335
SS2658	1/15	115	2.30	1550	3.42"	3/8" x 2.42"	CCWSE	10" Cord & Plug - Hex Hubs	Keeprite 8/356
SS2603	1/35	115	1.15	1550	3.17"	1/2" x 2.10"	CCWSE	12" Cord & Plug - Hex Hubs	Reversomatic DB200/260

