

# OMNIDRIVE

## Loren Cook

OEM Replacement Motors

Ceiling & Rooftop Exhaust Fans



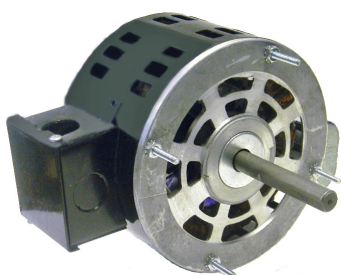
SS2224 - SS3234 - SS4200



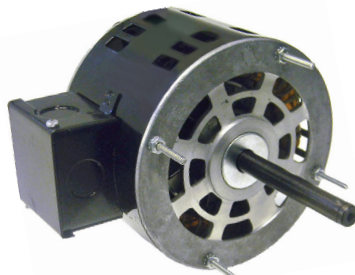
SS5200



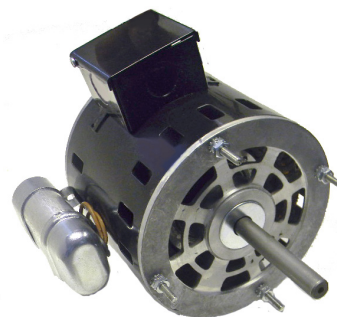
SS6264 - SS7274



C06E2A



C07E4A



C09E4A

- Drop in Replacement for many Loren Cook OEM Motors
- Long Life Self Aligning Sleeve Bearings
- Shaded Pole & P.S.C.
- Open Air-Over Design
- Automatic Overload
- Wiring Harness with Plug supplied when Required
- (\*) Indicates Motors are P.S.C Design

Stock #	Diameter	HP	Volts	Amps.	RPM	"A"	Shaft	Rotation	Replaces
SS2224	4.4"	1/114	115	0.75	1500	2-3/8"	3/8" x 2-3/4"	CWSE	220/240, 615053
SS3234	4.4"	1/16	115	2.20	1550	2-5/8"	3/8" x 2-1/2"	CWSE	320/340, 615054
SS4200	4.4"	1/23	115	1.50	1500	2-5/8"	3/8" x 2-3/4"	CWSE	420, 615055
SS6264	4.4"	1/11	115	4.60	1500	3.00"	1/2" x 6-1/4"	CWSE	620/640, 615057
SS5200 *	5.0"	1/16	115	1.50	1200	3.00"	3/8" x 2-1/4"	CWSE	520, 615056
SS7274 *	5.0"	1/4	115	3.90	1625	3 3/8"	1/2" x 6-1/4"	CWSE	720/740, 615058
C06E2A *	5.5"	1/8	115	1.40	1600	3.53"	1/2" x 3.00"	CWSE	C03E2A, CK48HC21P87, 100133
C07E4A *	5.5"	1/6	115	1.80	1100	3.83"	1/2" x 3.43"	CWSE	100170, K55HXDRT-498 CK48HCZ1M75
C09E4A *	5.5"	1/3	115	4.80	1080	5.00"	1/2" x 3.00"	CWSE	100172, CK48HC21589

