

# OMNIDRIVE

## NEMA 42 Frame / 5" Diameter

### Totally Enclosed Construction

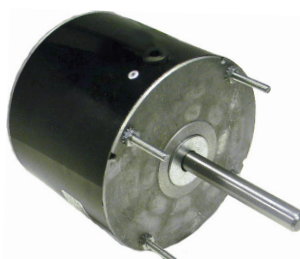
Unit Heaters, Furnace Blowers, Refrigeration



SS2615 - SS2360



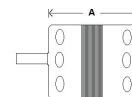
SS2380



J011



SS6920



- Continuous Duty
- Mechanically reversible (S.P. only)
- Class "A" insulation
- UL Listed & CSA approved
- Shaded pole & P.S.C designs
- Thermally protected
- TEAO
- Long Life Sleeve Bearings or Sealed Ball Bearings

Stock #	HP	Volts	Amps.	RPM	"A"	Shaft	Rotation	Comments	Replaces
SS2615	1/8	115	4.60	1050	3.87"	1/2" x 3.30"	CWSE	Cushion Rings 3 Mounting Studs S.E.	Reznor / Luxaire
SS2360	1/15	115	2.30	1050	3.32"	1/2" x 2.80"	CWSE	Cushion Rings 3 Mounting Studs S.E.	Reznor / Luxaire
SS6920	1/15	115	2.70	1050	3.87"	3/8" x 3.55"	CWSE	Cushion Rings 4 Studs on 3.50" B.C.D	Robbins & Myers / Lennox ICP / Keeprite
J011 •	1/10	600	0.85	1550	7.60"	1/2" x 7.23"	CWSE	4 Studs on Shaft End	Chromalox
SS2380 *	1/8	115	2.30	1075	4.90"	1/2" x 2.20"	CWSE	Resilient Base	Robbins & Myers / Reznor

