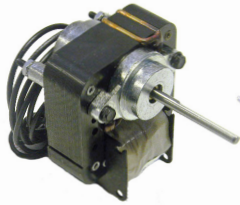
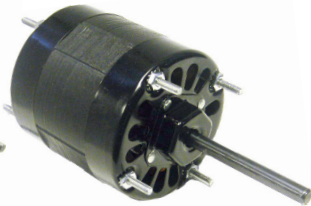


OMNIDRIVE

Blanchard-Ness, Hussmann OEM Replacement Motors



SS605



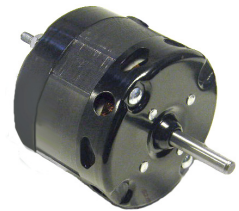
SS358 - SS359



SS318 - SS326



SS300



SS332



SS130



SS302



SS511



SS739B



RMT0062

- Drop in Replacement for many Blanchard-Ness (Hussman) Motors
- Long Life Self Aligning Sleeve & Sealed Ball Bearings
- Shaded Pole, P.S.C. & 3 Phase Design
- Open or TEAO Construction

• (•) Indicates Motors are Ball Bearing

| Stock # | Diameter | HP | Volts | Amps. | RPM | "A" | Shaft | Rotation | Replaces |
|----------|----------|-------|-----------|-------|------|--------|----------------|----------|---------------------------------|
| SS605 | Skeleton | --- | 120 | 1.00 | 2800 | 5/8" | 3/16" x 1-3/4" | CCWSE | 79103, 79104, E1014 |
| SS358 | 3.3" | 1/15 | 115 | 2.20 | 1550 | 3.32" | 5/16" x 3.20" | CWSE | 50011, E1008, E1052, E1055/8 |
| SS318 | 3.3" | 1/20 | 115 | 1.60 | 1550 | 2.85" | 5/16" x 2.80" | CCWSE | 79105, 5010S, E1007, E1057 |
| SS359 | 3.3" | 1/20 | 208 - 230 | 1.10 | 1550 | 3.35" | 5/16" x 3.20" | CWSE | 5008T, 503414, E1009, E1053/6/9 |
| SS300 | 3.3" | 1/25 | 115 | 1.80 | 1550 | 2.59" | 5/16" x 2.50" | CWSE | E1068 |
| SS332 | 3.3" | 1/25 | 115 | 1.50 | 1550 | 2.59" | 5/16" x 1.50" | CCWSE | 79107, 5001F |
| SS130 | 3.3" | 1/45 | 230 | 0.80 | 1550 | 2.71" | 5/16" x 1.50" | CCWSE | 79106, 79108, 79113, 5001M |
| SS326 | 3.3" | 1/85 | 115 | 0.50 | 1550 | 1.90" | 1/4" x 1.45" | CCWSE | 79101, E1001, E1002, E1003 |
| SS302 | 3.3" | 1/100 | 240 | 0.30 | 1400 | 2.00" | 1/4" x 1.50" | CCWSE | E1004 |
| SS511 | 3.3" | 1/100 | 240 | 0.28 | 1350 | 2.10" | 1/4" x 2.00" | CCWSE | 79115 |
| SS739B • | 5.5" | 1/4 | 208 - 230 | 1.70 | 825 | 4.25" | 1/2" x 6-1/2" | REV. | E1026 |
| RMT0062 | 56Y | 1-1/2 | 575 | 2.50 | 860 | 10.50" | 5/8" x 2.50" | REV. | E5039 |

