

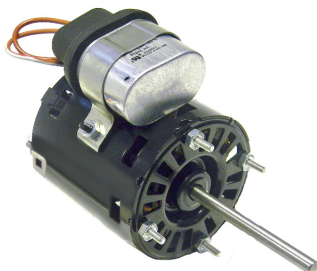
OMNIDRIVE

Bohn/Larkin (Heatcraft)

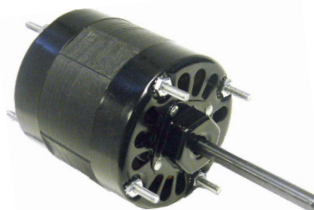
OEM Replacement Motors



SS605



SS9721



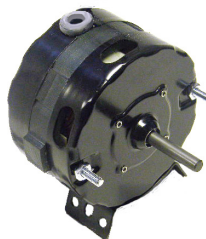
SS358 - SS359



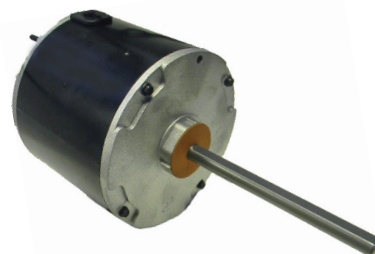
SS574 - SS575



SS332



SS326



SS3729 - SS3730

- Drop in Replacements for many Bohn/Larkin OEM Motors
- Long Life Self-Aligning Sleeve & Sealed Ball Bearings
- Open or TEAO Construction
- Shaded Pole & P.S.C. Designs
- Wiring Harness with Plugs supplied when Required
- (●) Indicates Motors are Ball Bearing

Stock #	Diameter	HP	Volts	Amps.	RPM	"A"	Shaft	Rotation	Replaces
SS605	Skeleton	---	120	1.00	2800	7/8"	3/16" x 1-3/4"	CCWSE	Vent Fan
SS9721	3.3"	1/12	115 / 208 - 230	1.10 / 0.60	1550	3.62"	5/16" x 3.15"	REV.	253-9101
SS358	3.3"	1/15	115	2.20	1550	3.32"	5/16" x 3.20"	CWSE	5001L, 8S, 4L
SS359	3.3"	1/20	208 - 230	1.10	1550	3.35"	5/16" x 3.20"	CWSE	5009T, 5034M
SS574	3.3"	1/20	115	1.90	1550	2.75"	5/16" x 2.50"	CCWSE	253-1194
SS575	3.3"	1/20	230	0.89	1550	2.75"	5/16" x 2.50"	CCWSE	253-1195
SS332	3.3"	1/25	115	1.50	1550	2.59"	5/16" x 1.50"	CCWSE	79107, 112, 5001F, 11S, 20F, 35F
SS326	3.3"	1/85	115	0.50	1550	1.90"	1/4" x 1.45"	CCWSE	79101
SS3729 ●	5.5"	1/3	208 - 230	2.70	1075	4.61"	1/2" x 6.00"	REV.	7.5 / 370
SS3730 ●	5.5"	1/2	208 - 230	3.50	1075	5.11"	1/2" x 6.00"	REV.	10 / 370

