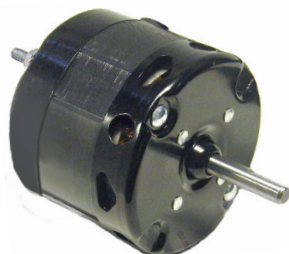


# OMNIDRIVE

## Woods, York (Luxaire) OEM Replacement Motors



SS336



SS235 - SS236



SS510



SS506



UFM653



SS2360 - SS6920 - SS2615



SS2380

- Drop in Replacements for many Woods, York (Luxaire) OEM Motors
- Self Aligning Sleeve or Ball Bearings
- Shaded Pole & P.S.C. Design
- Thermally Protected
- (~) Indicates Motors are Double Shafted
- (\*) Indicates Motors are P.S.C. (●) Indicates Motors are Ball Bearing

Stock #	Diameter	HP	Volts	Amps.	RPM	"A"	Shaft	Rotation	Replaces
SS235	3.3"	1/80	115	0.90	1050	2.35"	1/4" x 1.10"	CWSE	270099010
SS236	3.3"	1/50	115	1.00	1575	2.10"	1/4" x 1.00"	CWSE	27009909
SS336	3.3"	1/20	115	1.80	1550	2.50"	1/4" x 1.17"	CWSE	270099012
SS506	3.3"	1/140	115	0.50	1400	1.87"	1/4" x 2.00"	CCWSE	2N8701
SS510 ~	3.3"	1/50	120	1.10	1250	2.12"	1.19" x 1/4 x 1.53"	CWLE	Humidifier
UFM653 ●	3.3"	1/12	230/460	1.20 / 0.60	3000	6-7.50"	1/4" x 2.25"	CCWSE	D1, D2, D3 Roof Top Units
SS2360	5.0"	1/15	115	2.30	1050	3.32"	1/2" x 2.80"	CWSE	Unit Heater
SS6920	5.0"	1/15	115	2.70	1050	3.87"	3/8" x 3.55"	CWSE	Unit Heater
SS2615	5.0"	1/8	115	4.60	1050	3.87"	1/2" x 3.30"	CWSE	Unit Heater
SS2380 *	5.0"	1/8	115	2.30	1075	4.90"	1/2" x 2.30"	CWSE	Unit Heater

