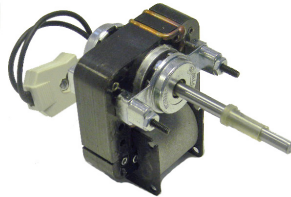


OMNIDRIVE

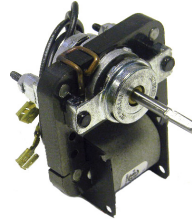
Chromalox (Dimplex) OEM Replacement Motors



SS3670



SS611



SS617 - SS635



SS210 - SS217



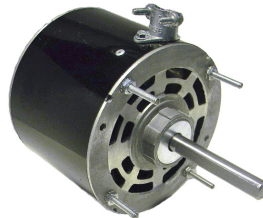
SS213



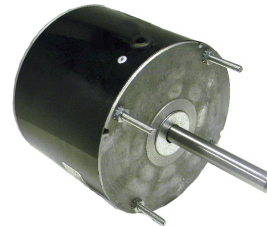
SS212B - SS212S - SS215



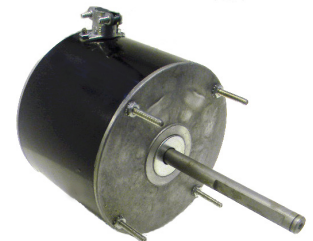
SS480



G018



J011



E004 - F006

- Drop in Replacements for many Chromalox OEM Motors
- Long Life Self Aligning Sleeve & Sealed Ball Bearings
- Thermally Protected
- (●) Indicates Motors are Ball Bearing

Stock #	Diameter	HP	Volts	Amps.	RPM	"A"	Shaft	Rotation	Replaces
SS3670	Skeleton	---	120 / 240	0.40 / 0.26	3000	1.76"	3/16" x 1.50"	CWSE	Heater
SS611	Skeleton	---	120	0.60	1500	1.60"	3/16" x 1.65"	CCWSE	Heater
SS617	Skeleton	---	208 - 240	0.22	1900	1.47"	3/16" x 1.30"	CWSE	04290-004
SS635	Skeleton	---	208 - 240	1.20	1550	2.64"	1/4" x 1.50"	CCWSE	Heater
SS210	3.3"	1/50	230	0.40	1550	2.30"	1/4" x 1.56"	CWSE	2868-407-128, 2868-405-168, 131,
SS213	3.3"	1/25	115	1.40	1550	3.10"	5/16" x 1.78"	CWSE	2868-507-125, 2868-511-020
SS215	3.3"	1/300	240	0.24	1200	2.22"	5/16" x 2.25"	CWSE	2868-505-016, 085
SS217	3.3"	1/40	240	0.50	1550	2.34"	1/4" x 1.56"	CCWSE	2868-407-130
SS212B ●	3.3"	1/35	240	0.55	1550	2.84"	5/16" x 3.50"	CWSE	2868-405, 23405, 23388
SS212S	3.3"	1/30	240	0.55	1550	2.80"	5/16" x 3.54"	CWSE	2868-405, 23405, 23388
SS480	3.3"	1/30	208 - 240	0.80	1500	4.05"	3/8" x 2.38"	CWSE	2868-511-105
G018 ●	5.0"	1/10	600	0.64	1550	4.00"	1/2" x 7.23"	CWSE	01520-003, 007
J011 ●	5.0"	1/10	600	0.83	1550	4.00"	1/2" x 7.23"	CWSE	01520-115
E004 ●	5.5"	1/6	575 - 3ph	0.30	1140	3.80"	1/2" x 4.60"	REV.	03167-007
F006 ●	5.5"	1/6	575 - 3ph	0.30	1725	4.80"	1/2" x 4.60"	REV.	01520-020

