

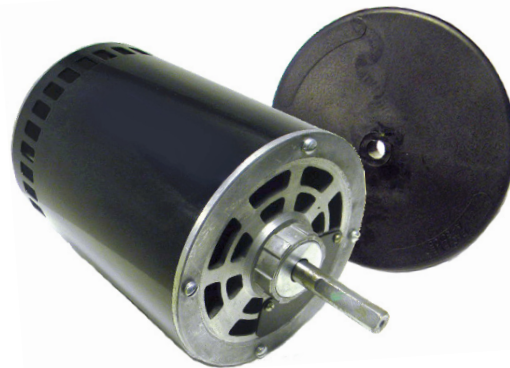
OMNIDRIVE

Dunham Bush

OEM Replacement Motors



SS124 - SS125



SS9428

- Drop in Replacements for many Dunham Bush Motors
- Self Aligning Sleeve & Sealed Ball Bearings
- Shaded Pole & 3 Phase Designs
- Rain Shield supplied on SS9428
- Lead & Plug Assembly on SS124 & SS125
- (●) Indicates Motors are Ball Bearing

Stock #	Diameter	HP	Volts	Amps.	RPM	"A"	Shaft	Rotation	Replaces
SS124 ●	3.3"	1/20	115	1.55	1550	2.80"	Hubless	CWSE	350044, 46, MM2847
SS125 ●	3.3"	1/20	230	0.80	1550	2.80"	Hubless	CWSE	350043, 45, MM2848
SS9428	5.5"	1	575-3ph	1.70	1100	7.50"	1/2" x 2.75"	REV.	142935, HM3T007, 010

