

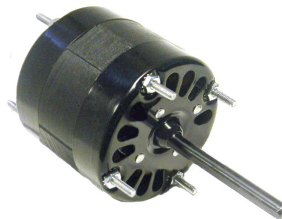
OMNIDRIVE

Grainger (Dayton)

OEM Replacement Motors



SS262



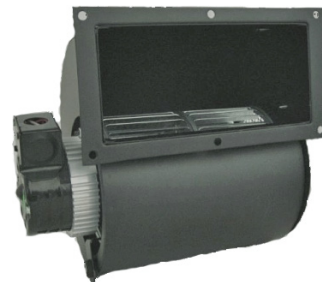
SS356



UB160



UB265



UB465

- Drop in Replacements for many Dayton Motors & Blowers
- Shaded Pole Design
- Thermally Protected
- Self Aligning Sleeve Bearings
- Open & TEAO Construction

Stock #	Diameter	HP	Volts	Amps.	RPM	"C"/"A"	Shaft	CFM/Rotation	Replaces
UB160	Blower	1/33	115	1.10	1550	6-3/4"	----	160	4C458, 50755-D500
UB265	Blower	1/25	115	1.40	1500	7.00"	----	265	4C447, B45227
UB465	Blower	1/15	115	2.60	1550 / 2	10-1/2"	----	465	4C448, B45267
SS262	3.3"	1/40	115	1.10	1550	2.34"	5/16" x 1.50"	CCWSE	3M723
SS356	3.3"	1/20	115	1.80	1550	2.32"	5/16" x 2.30"	CWSE	3M547

