

OMNIDRIVE

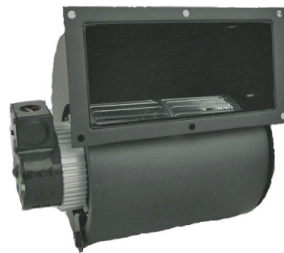
Greenhouse Blowers



UB160



UB265



UB465



UFB500

- Drop in Replacements for many Greenhouse Blowers
- Shaded Pole Design
- Long Life Sleeve Bearings
- Thermally Protected
- Open Construction Motors
- All Angle Mount
- Class 'B' Insulation
- Single & Two Speed Models

Stock #	Diameter	HP	Volts	Amps.	RPM	"C"	Shaft	CFM	Replaces
UB160	Blower	1/33	120	1.10	1550	6.59"	----	160	50755-D500
UB265	Blower	1/25	115	1.40	1550	7.00"	----	265	B45227
UB465	Blower	1/15	115	2.60	1550	10-1/2"	----	465	B45267
UFB500	Blower	1/33	115	1.10	2860	6.00"	----	140	4C442, RFB500

