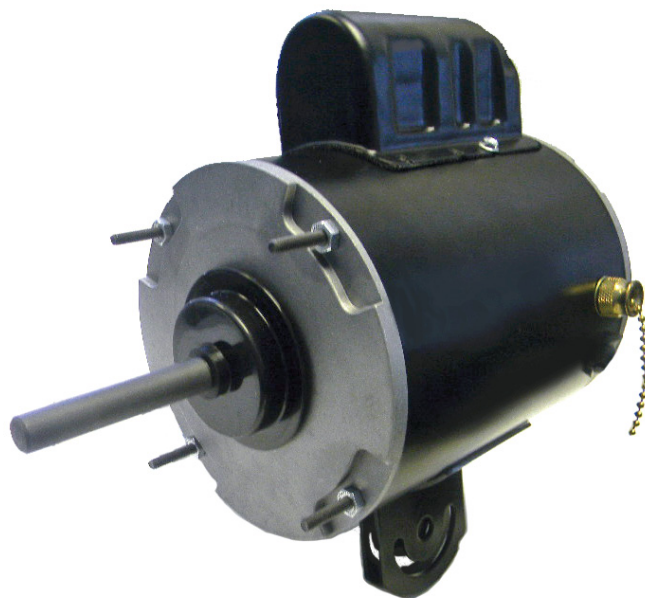


# OMNIDRIVE

## 48 Frame Pedestal Fan Air Circulator Motors



SS486 - SS647

- Drop in Replacements for many OEM & Aftermarket Motors
- Sealed Ball Bearings
- Yoke Mount - Extended Thru-Bolts
- Thermally Protected
- TEAO Construction
- 2 Speeds with Pull Chain
- 10 Foot Cord & Plug

Stock #	HP	Volts	Amps.	RPM	"A"	Shaft	Rotation	Capacitor
SS486	1/4	115	3.40	1100 / 2	6.50"	1/2" x 3.00"	REV.	Included
SS647	1/3	115	4.40	1100 / 2	6.90"	1/2" x 3.00"	REV.	Included

